



GRDuw for ©Windows 95: The fast & easy way to duplicate your diskettes.

```
{button What is GRDuw ?,JI("", "What_is_GRDUW_")}
{button Frequently Asked Questions,JI("", "Frequently_Asked_Questions")}
{button Version History,JI("", "Version_History")}
{button About the Author,AL("", 0, "About_The_Author", "")}
{button How to Register,JI("", "How_to_Register")}
{button Update / Support,JI("", "Update_Support")}
{button License / Copyright,JI("", "License_Copyright")}
{button Distribution,JI("", "Distribution")}
{button Other Programs,JI("", "Other_Programs")}
{button Informazioni in Italiano,JI("", "Informazioni")}
```

Installing GRDuw.

Create a new directory and copy the files in the archive to that directory.

Removing GRDuw.

Simply delete the directory you installed the GRDuw files in.

User Guide.

When you run the shareware version of the program, the **About** dialog box will appear showing the program version and the author's address. This information allows the user to register quickly.

Clicking the **OK** button will initiate the program execution.

The program uses a property sheet dialog box interface with the following pages:

DupDisk

Format

Repair

Boot

Info

Options

The **Drive** combo box is displayed in the upper right corner of every dialog box except for the Options dialog box. The drive combo box allows the user to select the logical drive to work with. The drive selection is the same for each dialog box except for the DupDisk dialog box which only allows for the selection of removable drives.

Development Information.

GR Disk Utility for Windows® 95 (GRDuw) was written in C++ with the Microsoft Visual C++ compiler and the aid of the Microsoft MFC.

This program was developed and written by Roberto Grassi.

Many thanks to my wife, Michela, and our sons, Fabio and Ilaria for their patience and encouragement.

Many thanks, also, to Kauppi Asko and John Christian for their suggestions.

Epilog.

The help file has been kept small since the program is very simple to use. However if you have any questions, please do not hesitate to contact me. See Contact Information for my mailing addresses.

I'm checking my email at least once a week.

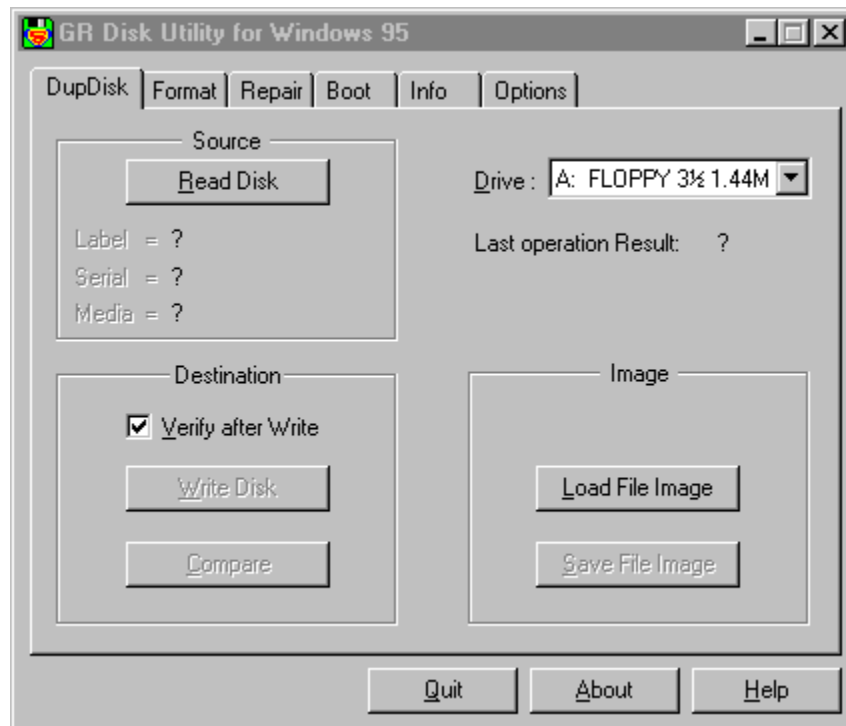
Windows 95, Windows NT, Visual C + + and MFC are ® trademarks of

Microsoft Corporation.

DupDisk

This dialog box allows you to duplicate diskettes.

This is a picture of the dialog layout:



First you must select a drive from the **Drive** combo box in the upper right corner.

In this dialog box you will find the following three groups:

- Source
- Destination
- Image

The first time you enter this page, only the **Read Disk** button in the Source group and the **Load File Image** button in the Image group are active.

Before continuing you must load the program memory with a diskette image. You have two choices:

1. Press the **Read Disk** button to read a diskette. If you haven't put the source diskette into the drive, the program will ask for it and warn you if

the source diskette isn't write protect. Write protection will prevent mixing source and destination diskettes by accident. While reading the diskette, a Progress Bar will appear indicating the percentage of diskette already read.

2. Press the **Load Disk Image** button to read a diskette image from your hard drive.

When the memory has been loaded with a diskette image, the Source group will display the volume label, the serial number and the disk media in order to identify the selected diskette image.

When one of the previous two operations has been completed, the remaining three buttons will become active. Now you perform any of the following:

- Press the **Compare** button to compare the current memory image against another diskette.
- Press the **Write Disk** button to write the current memory image onto another diskette. Selecting **Verify after Write** takes a little more time but assures that the data are correctly written.
- Press the **Save File Image** button to save the current memory image into a file image for later use. The first time you press this button, you must enter a proper file name to save the file. If you enter a file name that end with a number, the subsequent saves automatically set the file name with that number incremented.

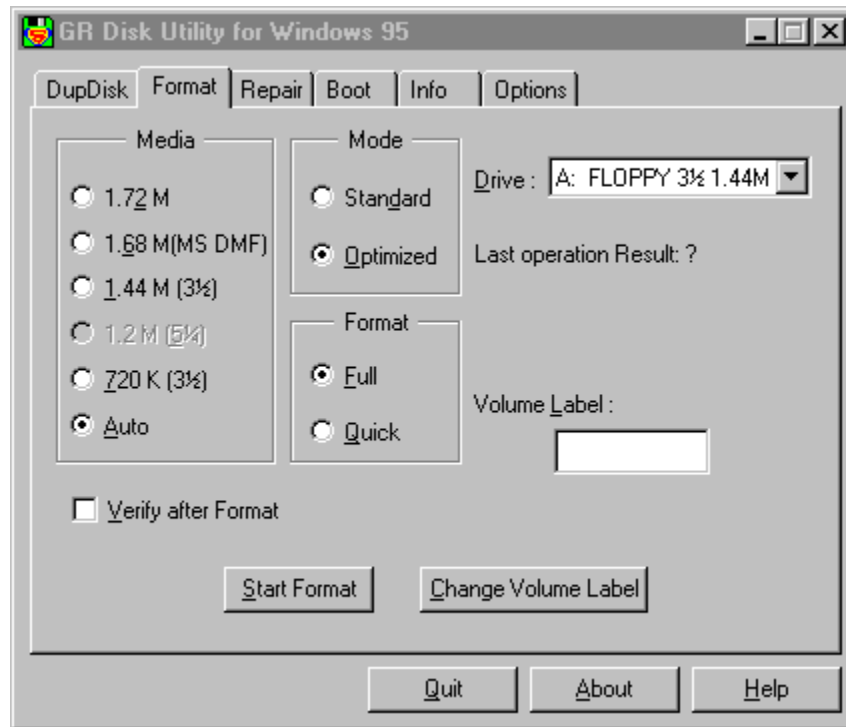
If GRDuw determines that the diskette isn't formatted it will automatically format it.

The Last operation Result text always shows you the result of the last operation performed.

Format

This dialog box allows you to format either your diskettes or your hard disk drive.

This is a picture of the dialog layout:



First you must select a drive from the **Drive** combo box in the upper right corner.

In this dialog box you will find the following three groupings:

- Media
- Mode
- Format

Media.

You can select a diskette media type if you want to assure that the diskette is formatted with the correct media type or you can select the Auto option to leave the choice up to GRDuw.

The listed media are the standard 720KB (3½), 1.2MB (5¼) and 1.44MB (3½)

formats, plus two additional nonstandard formats; the 1.72MB (3½) and the 1.68MB (3½) formats.

The 1.72MB media is a special format automatically recognized by Windows 95 when you use Explorer or any other Windows shell. Windows 95 cannot format 1.72MB but is able to read and write to this type of disk media.

The 1.68MB media is the nonstandard format used by Microsoft to distribute its software packages. This format is identified as 1.68MB or MSDMF media type. The number of sectors of the MSDMF type is equal to the 1.72MB type; the difference is that the MSDMF format only allows 16 files or directories on the disk root, while the 1.72MB, having two more tracks on the disk surface, allows a root directory equal to that of a 1.44MB diskette.

Mode.

The available modes are:

- **Standard:** the classic MS-DOS format mode (interleave 1 and skew 0).
- **Optimized:** to have the best interleave and skew factor in order to speed up the read/write operations on the diskette.

The **Standard** option is renamed to **Low level** when you select a fixed drive. In this case, all the media options also became inactive and the selected option is **Auto**.

Format.

You can select, if you want, a **Full** format or a **Quick** format.

The **Full** format performs the low level recreation of the disk tracks by regenerating the sector syncs and other low level signals.

The **Quick** format only rewrite the system area in order to free up all the disk space. The advantage of **Quick is the speed**, while the **Full** mode is slower but safer.

You have the option to verify that the format procedure was successfully completed. To enable verify, check the **Verify Disk After Format** box. When the program has completed formatting the disk, the program automatically starts a verification procedure. During the disk verify, the program is able to mark as BAD the tracks that cannot be read leaving you a safe usable diskette. This additional operation takes an additional time but is recommended to avoid problems when you copy the data on the disk.

You can assign a volume label to the disk by typing a string into the **Volume**

Label edit box.

Press the **Change Volume Label** button to get a dialog box that allows you to edit the selected drive Volume Label. By pressing the **Change** button in this dialog box, you will write the new label into the disk. If the disk is write protect or isn't inserted into the drive (for example a floppy disk) you will get a message telling you that the program isn't able to write the volume label to the disk. In this case you can correct the problem and press the **Change** button again.

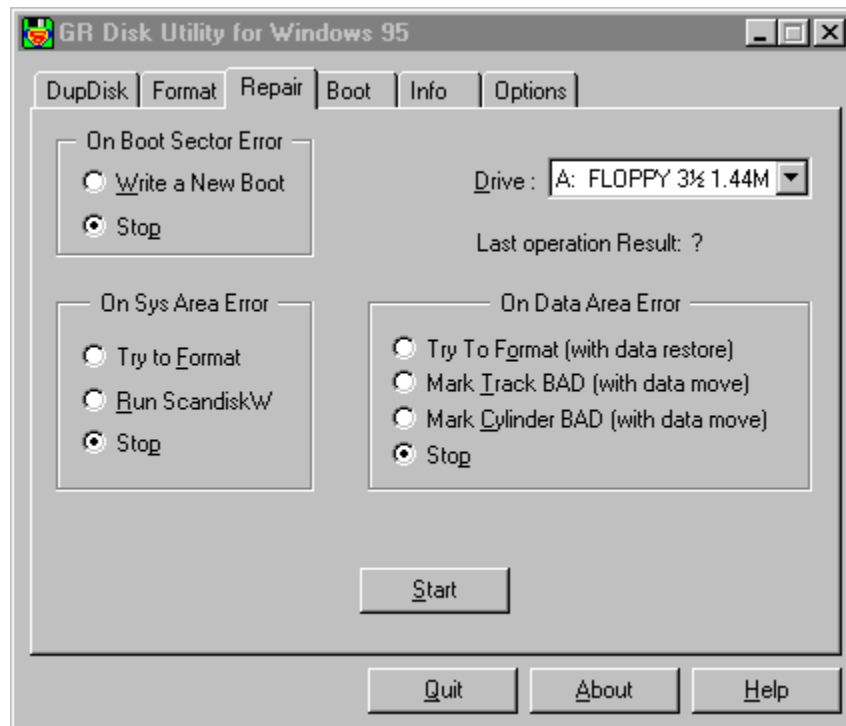
By pressing **Cancel** you will exit this dialog and the volume label will not be changed. When the volume label is changed, it will be written into the **Volume Label** edit box. In any case if you enter a string into the **Volume Label** edit box and press the **Change Volume Label** button, this edited string is not taken into account, but the program reads the volume label directly from the currently selected drive.

The Last operation Result text always shows you the result of the last operation performed.

Repair

This dialog box allows you to repair your diskettes or your hard disk drives.

This is a picture of the dialog layout:



First you must select the drive from the **Drive** combo box in the upper right corner.

In this dialog box you'll find the following three groupings:

- On boot sector error
- On sys area error
- On data area error

This dialog box allows you to try a disk repair procedure when you discover disk errors.

Selecting the **Stop** option on all 3 groups only checks the disk and advises you if any errors are found; modification or repair action will not be taken.

On Boot Sector Error.

In this group you can select the **Write a New Boot** option to regenerate the boot sector or the **Stop** option to only check for errors. With the **Write a New Boot** option, a new standard boot sector will be written to the disk if the actual boot sector is in error.

This option can be very useful when you have a virus in the boot sector.

On Sys Area Error.

In this group you have 3 options. The **Try to Format** option allows you to try to format the track in error. This is the only valid option you have to try to recover a disk damaged in the system area. The **Run ScandiskW** option delegates the Scandisk program the difficult work of repairing this kind of an error. The **Stop** option simply inform you of the error and stops the procedure.

On Data Area Error.

This area has the greater probability of repair success. In this group you have 4 options:

- Try to Format (with data restore)
- Mark Track BAD (with data move)
- Mark Cylinder BAD (with data move)
- Stop (This option, as before, will warn you and stop the procedure.)

Try to Format (with data restore).

This option reads the track in error (doing it's best to read all the sectors in error) and then tries to format the track many times. If the format succeeds, the program writes back the data it was able to read, otherwise it terminates.

Mark Track BAD (with data move).

This option reads the clusters in error (as many clusters that fit into a track) and moves them into a safe free disk data area. Then the program marks these clusters as BAD so that the file system will never use them again.

Mark Cylinder BAD (with data move).

This option is very similar to the previous option except that it works with a disk cylinder instead of a disk track. A cylinder is a track for all the heads i.e., it's a data area greater then the previous one. This option can be useful on hard drives when a complete disk area is damaged and it is safer not to use any part of the damaged area but mark it all unusable.

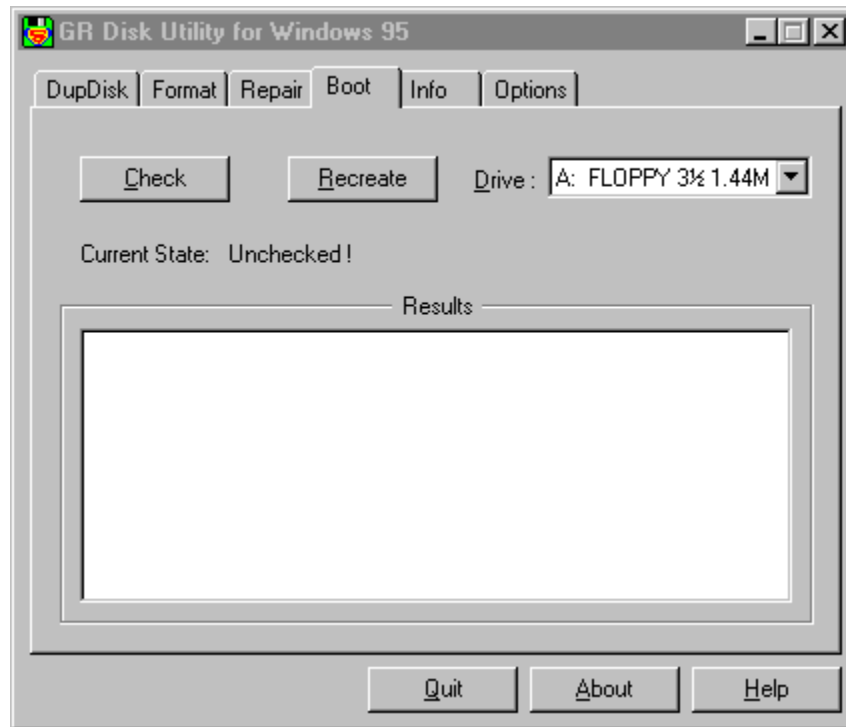
When you have selected the desired repair program option, you can press the **Start** button to begin the repair procedure.

The Last operation Result text always shows you the result of the last operation performed.

Boot

This dialog box allows you to check and repair your diskette or hard drive boot sector.

This is a picture of the dialog layout:



First you must select the drive from the **Drive** combo box in the upper right corner.

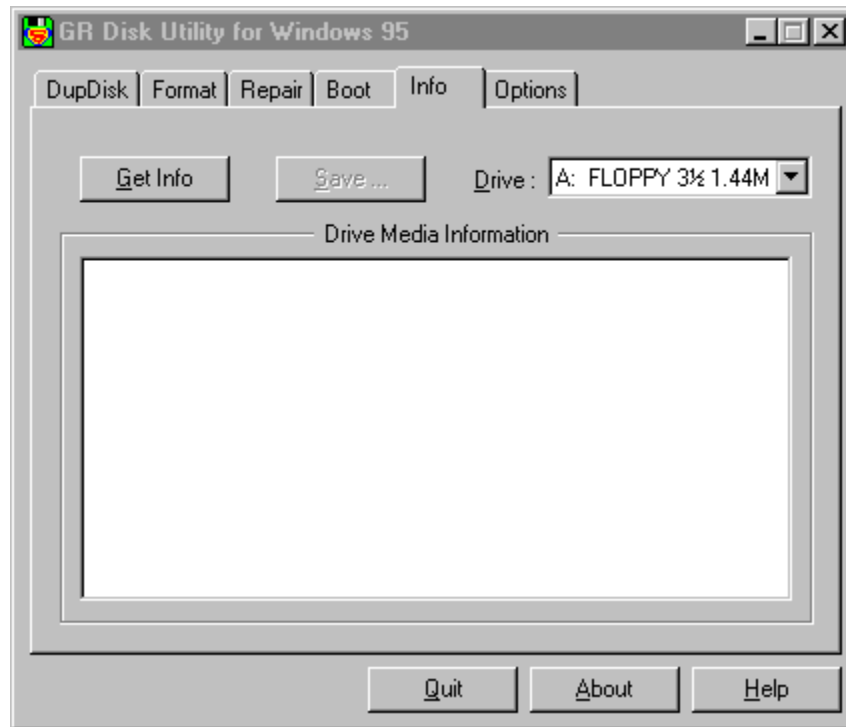
Press the **Check** button to determine if the boot sector is damaged or infected by a virus. This operation will read and evaluate the boot sector. The check data are displayed in the **Results** list box and shows you all the noncompliance this procedure has found.

Press the **Recreate** button if you want to write a safe boot sector.

Info

This dialog box allows you to collect some useful technical information about your diskette or hard drive.

This is a picture of the dialog layout:



First you must select the drive from the **Drive** combo box in the upper right corner.

If you press the **Get Info** button you load the **Drive Media Information** list box. After the information is collected from the drive you can scroll the information in the **Drive Media Information** list box by pressing the up/down keys.

Useful information you will find in the list box are:

- the volume label of the drive
- the detected media type
- the boot OEM string that identifies who formatted the media
- the physical drive device
- the media type (standard or double space compressed)
- the FAT type (FAT 12, FAT 16, FAT 32).

- the total number of sectors
- the disk size
- the free disk space

and the more advanced user will find also:

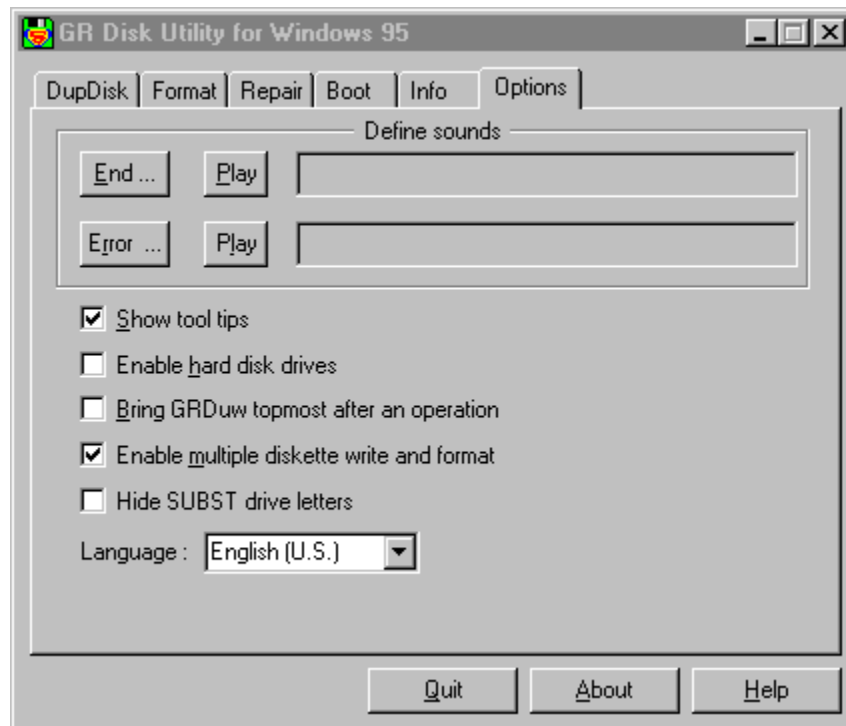
- the logical disk layout
- the physical disk layout

The **Save ...** button is active only if you have already pressed the **Get Info** button and the **Drive Media Information** list box is not empty. This button let you save the **Drive Media Information** list box contents to a text file.

Options

This dialog box allows you to set the program options.

This is a picture of the dialog layout:



This dialog box allows you to customize GRDuw behaviors.

Define Sounds (for REGISTERED user only).

First of all you can define the sound that the program will use to signal you that the requested operation (Job) is completed or that an error has occurred.

The two leftmost buttons **End ...** and **Error ...** allows you to select a wave file that will be displayed in the rightmost edit box (not editable).

The two intermediate buttons labeled **Play** allows you to check the selected sound. The shareware version define two standard sounds for these events.

Enable tool tips.

This option allows you to enable/disable the tool tips messages. The beginner users normally select this option while the expert users have no need for the

tips messages.

Enable hard disk drives (for REGISTERED user only).

This option allow you to enable hard drives access. As this option can be unsafe (you can format your hard drive), the default enable value is NOT selected. When you have problems with your hard drives you can enable it and try to repair the hard drive problem.

Bring GRDuw topmost after an operation (for REGISTERED user only).

This option allows you to perform other jobs while your diskette is being duplicated, repaired or formatted by GRDuw. When the operation is completed, the GRDuw window will became the topmost window and alert you that it's work is completed. Obviously you must pay attention, if you use the keyboard when the GRDuw window become the topmost window then all keystroke will go to GRDuw.

Enable multiple diskette write and format (for REGISTERED user only).

This option can be very useful when you must generate many diskettes from the same source diskette or image. This option allows you to perform other tasks while the diskettes are being generated int the background. With this option checked you will be alerted by the programmed **End ...** sound that the current diskette is completed. You only have to remove the diskette from the drive, insert another diskette and wait for the next **End ...** sound event. The same also applies when you format a diskette. In general you might have a box of diskettes to format and this option can speed up the format process while you work at other tasks. When you want to change the diskette, you bring the GRDuw window up and press the **Terminate** button (see [Progress](#)). Easy enough?

Hide SUBST drive letters.

This option allows you to skip the drive letters that you have created with the SUBST command line utility. This utility map a drive letter to an existing path name.

The only limitation of this option is that if you have two physical hard drives with the same volume label or no volume label then the second hard drive is erroneously interpreted as SUBST. This limitation is due to the fact that the Win32 environment doesn't not support SUBST drives which has been inserted by Microsoft on Windows 95 only for compatibility with Windows 3.1.

Language.

This option allows the user to select the language preference. Currently you will find the following options:

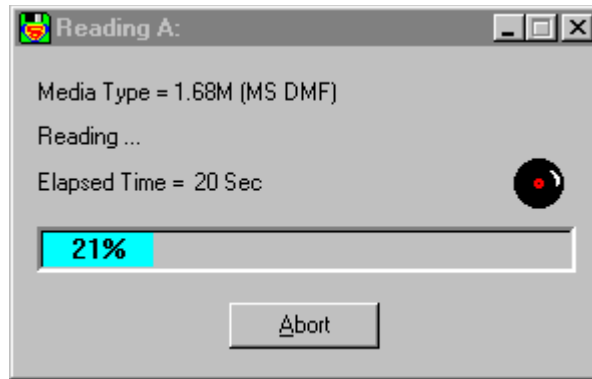
- English (U.S.)
- Italiano

I'm preparing a language development KIT that interested users can download to translate from the English (U.S.) to any other languages.

Progress

The progress dialog box allows you to see how GRDuw's work is proceeding.

This is a picture of the dialog layout:



The first text line shows you the disk media type.

The second text line shows you the various intermediate tasks that GRDuw can do on your disk.

The third line shows you the elapsed time since you started the operation.

The rightmost animated icon show you that the disk is running.

The colored bar with the percentage of execution inside lets you visually check how much work has been done. This bar is colored in different manners based upon the current operation. This also allows you to take a quick look to see what the program is doing. The color key is as follows:

Operation	Bar color	Text color
Formatting	red	white
Verifying/ comparing	green	black
reading	cyan	black
repairing/writing	blue	white

The **Abort** button lets you stop the current operation. When you press it, the text inside it changes in **Wait....** This alerts you that the program has registered your command, but must synchronize with the disk activity in order to execute it. When the synchronization is done, this dialog disappears. When the **Enable multiple diskette write and format** option is on and

the current disk operation is completed the **Abort** button changes in **Terminate** so that it is more obvious that by pressing it you will terminate the multiple operation.

What is GRDuw ?

GRDuw is a 32-bit disk utility for Windows 95.

What functions does it perform?

The following functions can be performed:

- Format diskettes (supported media are: 720KB, 1.44MB, 1.2MB, 1.68MB and 1.72MB. The 1.68MB media corresponds to the Microsoft Distribution Media Format (DMF).
- Format hard drives.
- Format in read/write access speed optimized mode or in standard MS-DOS mode.
- Duplicate diskettes on a single drive in two passes: read source disk and write destination disk.
- Save the diskette bit map image to a file on your hard drive for later use.
- Retrieve the diskette bit map image from a file and write it to a diskette.
- Compare a diskette to another diskette.
- Check a diskette or hard drive boot sector for viruses and create a new safe boot.
- Repair diskette or hard drive.
- Get technical disk information; logical and physical layouts.

GRDuw for Windows 95 will replace and enhance the standard Explorer functionality when you need to format or duplicate a disk.

To evaluate the GRDuw power try to answer to the following questions about the standard explorer:

- How much time it take to duplicate a formatted diskette from the explorer ?
- What does the explorer do when you try to duplicate a DMF (1.68MB) diskette ?

Why use GRDuw?

GRDuw offers many advantages over similar utilities and is especially better than the standard Windows 95 explorer capabilities. What follows are some of the reasons:

- GRDuw has an intuitive and easy interface.
- GRDuw can format a diskette in an optimized layout that speeds up the

read/write process.

- GRDuw supports the nonstandard software distribution formats.
- GRDuw can duplicate diskettes quicker.
- GRDuw can repair either diskettes or hard drives.

GRDuw Limitations.

- The program only function under Windows 95 and will not run under other operating systems.
- A Windows NT version **IS NOT** currently available.
- The program was tested using standard 1.44MB floppy drives. The 2.88MB drive was never tested. Beta testers are welcome.

Frequently Asked Questions

Q: Does GRDuw run under Windows NT?

A: No, for the moment it only works on Windows 95.

Q: Does GRDuw support 2.88MB disk drives?

A: No, support for this kind of drive will be added in a future release.

Q: Is the diskette image a binary copy of the diskette?

A: Yes, the content of the disk image is a one-to-one binary image copy of the disk contents.

Q: Why is a 1.72MB diskette listed by the Windows 95 Explorer as 1.66MB?

A: Click your desktop's "My Computer" icon. Next click the right button on the floppy icon and then select the "Properties" menu option. A property sheet will appear. Under the "General" Tab, the detailed diskette information will be displayed. The "Capacity" row will show you two numbers: the first is 1,745,408 bytes, while the second is 1.66MB. The first number is the EXACT diskette capacity, while the second is the approximate diskette capacity. The explorer calculates the exact capacity as follows:

$$1,664550781 * 1024 * 1024 = 1745408.$$

A kilobyte is 1024 bytes, not 1000 bytes.

Q: How I can associate a .dim (disk image) extension to GRDuw.exe?

A: GRDuw automatically does this when it executes.

Q: How I can create a desktop icon over which to drop my .dim files?

A: Click the right mouse button on the desktop. Select the "New" option and then the "Shortcut" option. The "Create Shortcut" Wizard will appear. Press the "Browse..." button and locate the GRDuw.exe file; press the "Open" button. Press the "Next" button and the "Finish" button. The GRDuw icon will now be displayed on the desktop where the .dim (disk image) files can be dropped.

Q: Can I use the explorer when GRDuw is writing/formatting a diskette?

A: The answer in theory is yes. However some users have found that this kind of use can lead to the system hang. As GRduw use the standard Win32 programming interface it is not known for the moment the cause of this problem. What is clear is that also others similar utilities lead to the

same problem.

Q: Why on my system formatting a 1.68MB or a 1.72MB diskette takes a long time or hang my system ?

A: Some users have experienced some problems when formatting this not standard diskettes. The problem can be an old BIOS ROM version. However the cause is not fully understood for the moment. What is clear is that also others similar utilities lead to the same problem.

Version History

December 1996 : Version 2.00.

- Added support for 1.2Mb 5 ¼ drives.
- Modified drive combo box to show the floppy drive type instead of the simple FLOPPY string. This allows a better distinction between removable drives.
- Relaxed the boot sector checks when loading an image file. This allows diskettes with boot sectors not fully compliant to be loaded as image file.
- Added to the Info dialog box a line that shows the FAT type (FAT 12, FAT 16 or FAT 32).
- Added the option to hide SUBST drive letters from the drive combo box. Previous versions had this option always on by default.
- Added the Language option. This allows future versions to support more languages. Now only English (U.S.) and Italian languages are supported.
- Modified the shareware program version. It does not stop the program from running after the 30 days trial period but only shows you how many days you are evaluating the program. You are on your honor to stop using this program if you are not a registered user.
- Few little bug fixes.

November 1996 : Version 1.92.

- Fixed a bug into the shareware expiration time calculation that prevents shareware version 1.91 of the program from running after November 4, 1996.
- Expanded the payment methods to allow an easier and automated registration of the program (see [How to Register](#)).

October 1996 : Version 1.91.

- Integrated more tightly into the Explorer shell automatically adding ".dim" extension support.
- Added an [Options](#) property sheet to select the following program options:
 - Show tool tips.
- **And for the registered users only:**
 - Programmable sounds.
 - Enable hard drives to avoid unsafe operations.
 - Bring GRDuw topmost after completing an operation.
 - Enable multiple diskette write and format.
- Added the free space display to the [Info](#) property sheet.
- Added an animated icon to the [Progress](#) dialog.

- Moved the "Change Volume Label" button from the Info property sheet to the Format property sheet.
- Changed the color of the progress bar, as follows:
 - While formatting : red bar with white text.
 - While verifying/comparing: green bar with black text.
 - While repairing/writing: blue bar with white text.
 - While reading: cyan bar with black text.
- The title of the progress bar was changed in order to show the volume label of the current disk.
- Added the About button to the main dialog to allow easier access to the program information dialog.
- Deleted a useless test during the compare diskette procedure that warned the user that the diskette is not write protected. If a user select the compare function after having completed a disk write, it is obvious that the disk is not write protected.
- The Progress dialog size was reduced.
- Added text to the DupDisk, Format and Repair boxes that explained whether the "Last operation Result" was completed successfully.
- After a diskette has been read by the DupDisk box, the "Write Disk" button is activated and the the source diskette can be duplicated by simply pressing the return key after inserting a blank diskette. The "Enable multiple diskette write and format" option on the Options dialog box allows (for registered users only) to write multiple copy of the same source diskette without pressing any keys: only removing the written disk and inserting a blank one.

August 1996 : Version 1.82.

- Added a help file instead of a manual.txt file.
- Easy activation of the registered user version by means of the grduw.key file. Using the .key file, the registered users can update their current version downloading the latest shareware version.
- Added a starting parameter so that it is possible to create a GRDuw desktop link icon. An image file can be dropped on the icon and loaded automatically. It's also possible to associate GRDuw and the .dim extension so that double clicking on a .dim file will execute GRDuw with the specified image file loaded. See Frequently Asked Questions for details.
- Corrected a bug with handling SUBSTed disk drives.
- Added a minimize box so that it is possible to minimize the progress and main dialogs. The task bar shows the percentage of the operation as the main dialog title.
- Fixed a bug when duplicating a diskette when the destination diskette is unformatted.
- Allows the read of a disk file image that is not the exact same size as the

disk media. The current image file loading procedure checks the first 512 bytes of the file to determine if this file piece is part of a boot sector. If you load an image file smaller than the original disk size, the unread data are random.

- Minor dialog text refinements.

June 1996: Version 1.71

- Added the volume label to the drive list box in order to better identify the correct disk drive.
- The image file format was changed in order to accept a pure binary disk image.
- Tool tips has been added to the dialog boxes as a simple help guide.
- In the DupDisk dialog box, a "Verify after write" check box has been added to verify the diskette write procedure.
- Minor dialog restyling.
- Minor bug fixes.

April 1996: Version 1.51

- This is the first release of this shareware program.

GRDuw is only available in Italian and in English. If a user would like to provide translations of the GRDuw documentation in another language, please contact me: [Contact Information](#) .

How to Register

Why register?

Registering this software provides the following advantages:

- Registration qualifies you for technical support, notification of upgrades and maintenance releases and information about new products. You will be added to our E-Mail list and alerted when major new releases will become available.
- Full user support will be provided.
- The license agreement allows the use of your registered software both at your home and at your office. This guarantees that you are **NOT** in violation of Internationals Copyright law!
- Registered user are entitled to receive one issue of the "Best of the Author to Vendor (A2V)" CD-ROM at a cost of US\$5.95 plus shipping and handling. See the file cert0001.doc for more detailed information.

How to register.

You are guaranteed that your fees will be taken only after the complete registered program or the key registration file has been delivered to you (via e-mail or snail mail)!

In order to register, you must compile the form that appears by running the register.exe application that accompanies the software package.

```
{button Run register.exe right now !,EF("register.exe","",1,"")}
```

Perform the following simple steps:

STEP 1: Enter all of your personal data.

Complete the "Register To:", the "E-mail" address and the "Postal Address" fields and, give us your comments if you wish.

STEP 2: Select the software you want to register.

Specify the "Quantity" and the "License" type you want.

Here are the available License types:

Single user license gives you the right to you to use the program at your home and at your office.

Site license gives you the right to use the program inside a single organization for an area of up to 100 miles (160 kilometers) in radius.

Worldwide license give you the right to use the program inside a single organization all over the world.

STEP 3: Select the payment method.

You have several options: cash to the author (10% discount), check or money order, VISA, MasterCard, American Express, First Virtual and Invoice.

STEP 4: Send the form.

If you have an e-mail connection, you can send this form directly to the "Kagi" shareware registration service. Otherwise, you can print the form and surface mail it to the address specified in the lower right of the dialog box.

Register now.

Click on the button below to register right now!

```
{button Run register.exe right now !,EF("register.exe","",1,"")}
```

What do you get after you register?

After you have sent the form to the Author or to Kagi for processing you will get an e-mail note from "Kagi" that confirms that your payment has been processed. Also, you will get e-mail from the "Author" with your personal copy of the **program.key** file (based on your personal data) attached. This key file will transform your shareware program into a fully registered one. It must be placed in the directory where the program executable resides.

IMPORTANT NOTE:

If you want any information about the program, please contact **only** the author (see [Contact Information](#)). Please, be sure to include all your personal data in the registration form so that we can build your personal program registration key file!

Update/Support

Updates.

As soon as you are registered and until further notice, all updates are free, provided that you get the latest version of the software from an electronic archive. The latest update is simply located over the previous version. The important thing to remember is to keep the file **GRDuw.key**.

Where is the latest Shareware version?

If you do not have access to a modem, we will mail you a diskette with the latest available version when we receive your registration form and license fee.

Otherwise you can check one of the following home pages on the World Wide Web:

[http://www.bsoftware.com/cgi-bin/fetchsan.cgi?
AuthorID=499,LocationID=1](http://www.bsoftware.com/cgi-bin/fetchsan.cgi?AuthorID=499,LocationID=1)
<http://mini.net/cgi-bin/sax?2347>

Moreover you can check the **WINSHARE** forum on CompuServe under the Mem/Disk library.

Reporting Bugs.

If you find a bug in the program, you can report it to one of the addresses listed in the documentation. Please provide the following information:

- An exact description of the bug and how it can be reproduced.
- The program version number. The version number can be obtained by pressing the "About" button.
- Windows version (for example, 4.950). You can get the version number by opening the control panel windows and double clicking the "System" icon. The version number will be displayed on the "General" property sheet.
- Fatal errors: The error address and the contents of the error box displayed by Windows.

Support.

If you have any problem please read [Frequently Asked Questions](#) .

If you still have questions or bug reports, you can reach us at the addresses listed in [Contact Information](#) .

Software License/Copyright

Software License.

IMPORTANT - READ CAREFULLY: by installing and using this software product, you agree to be bound by the terms of this software license. If you do not agree with the terms of this user license, promptly remove this product from your machine.

Shareware Version.

You have a right to test this program for a period of **one month**.

Use of this product after the trial period of one month is in **violation of International Copyright law!** It is also unfair to the author, who has spent hundreds of hours developing this product.

You are allowed to copy this Shareware Version, and **ONLY** the Shareware Version, and give it to any other person, as long as it is not modified in any way. Modifications is understood to means changing, adding or removing any files in this package without the author's written permission.

Registration.

This program is neither freeware nor public domain. Use after the 30-day trial period requires registration.

See [How to Register](#) for details on registration.

Registered version (Personal license).

The registered version may be installed on a maximum of two computers, so long as it is **ONLY** running on one system at any time: i.e. one installation at home and one installation at the office and used by the licensee. The simultaneous use of this product by multiple personnel requires additional licenses.

The licensee shall not use, copy, rent, lease, sell, modify, decompile, disassemble, reverse engineer, or transfer the licensed program except as provided in this agreement. Any such unauthorized use shall result in immediate termination of this license.

Multiple licenses (Site or Worldwide).

Multiple licenses allow an institution, company or school to install this product on multiple computers or on a server. The institution, company or school must guarantee that the program is not installed and run on machines that outside the license defined area.

- **Site license** gives you the right to use the program inside a single organization for an area of up to 100 miles (160 kilometers) in radius.
- **Worldwide license** give you the right to use the program inside a single organization all over the world.

All licenses will be issued in the name of the institution, company or school.

Each additional license also allows a single user to use the program at home.

The licensee shall not use, copy, rent, lease, sell, modify, decompile, disassemble, reverse engineer, or transfer the licensed program except as provided in this agreement. Any such unauthorized use shall result in immediate termination of this license.

Liability.

We try to keep our software as bug free as possible. However, it is a general rule, Murphy's, that no software is ever error free, and the number of errors increases with the complexity of the program. We cannot guarantee that this software will run in every environment, on any Windows compatible machine, or together with any other application, without producing errors. Any liability for damage of any sort is hereby denied. In any case, the liability is limited to the registration fee.

Please evaluate this program with not critical data. We cannot guarantee the safety of your data. Should you detect errors before registration, the user accepts the program errors after registration. Any description of software errors will be accepted, but we cannot guarantee that the errors can be corrected.

All mentioned trademarks and copyrights belong to their respective owners.

The author's legal domicile is Torino, Italy.

Distribution

The distribution of outdated versions of this package is prohibited without written permission of the author. If the software version you have obtained is over twelve (12) months old, please contact the author, see [Contact Information](#) , to ensure that you have the most current software version.

Vendor information.

The Shareware version of this program may be copied and given to anyone so long as it is not modified in any way. Modification is understood to mean the changing, adding or removing of any files of this package without the written permission of the author.

Small additions to the package, such as the introductory comments or an installation batch file used by many shareware disk vendors are authorized.

This program can NOT be packaged with any commercial program or book.

A distribution fee may be charged for the cost of the diskette, shipping and handling. The distribution fee, per diskette, may not exceed US\$8.00 in the U.S. and Canada, or US\$12.00 internationally.

Users are encouraged to put this program on as many BBS systems as possible. The distribution on CD-ROM is also permitted, as long as the original files are not changed in any way. Please contact the author (see [Contact Information](#)) if you want to distribute the program with a different installation program, changed files etc.

This package CANNOT be sold as part of some other inclusive package. Also it CANNOT be included in any commercial software packaging offer, without the written consent of the author.

All rights not expressly granted here are reserved to Roberto Grassi.

The author would appreciate copies of any articles written about this software package. Please forward copies of any reviews, articles, catalog descriptions, or other information that is distributed regarding this package.

Thank you for your time and assistance in supporting the shareware marketing concept.

Vendor Update Program.

Most vendors have standard procedures for acquiring new files. They get them from other vendors, BBSs, etc. Most authors cannot afford to mail disks to hundreds or possibly thousands of vendors. However, some vendors prefer to obtain programs directly from the authors. If you would like to automatically obtain programs directly from us, then please help us to cover the cost.

Under our Update Program you can receive updates for an entire year for only US\$10 per program.

To receive updates, simply send us a letter, see [Contact Information](#) , with your name, company name, mailing address, the name of the person, the program or programs for which updates are requested, and a check or money order for US\$10 for each program.

All vendors participating in our Vendor Update Program will automatically receive any NEW programs which we may release while their Vendor Update Program is in effect.

The Vendor Update Program is only intended to help cover our expenses in those cases where a vendor desires to obtain the program directly. If you have other means of obtaining our programs, then you may prefer not to use our Vendor Update Program.

Internet e-mail:

roberto.grassi@kagi.com

Snail mail address:

Roberto Grassi
P.O.Box 48
Leumann (Torino), 10096
ITALY

ING. Roberto Grassi.

I've been a software developer since 1978 (BASIC language) when I received my first degree in Electronics. Then I started working and studying to become an Electronic Engineer in 1985 with full votes.

My fulltime job is writing embedded applications in C/C++ language for a secure communications company in Italy. I'm involved in the development of the operating system and all the development utilities connected to them (debugger, project management, project backup, etc.).

I have seven years of programming experience in 'C' and three years in 'C++'.

I also develop some (what I hope are useful) PC utilities that I'm marketing via the shareware concept.

Please feel free to contact me if you need a software consultant and/or you want to start a business with me.

Other Programs

GRBack

GRBack is a 32-bit program used for backing up your drive's data. **GRBack** works well with either Windows 95 or Windows NT. **GRBack** is a great backup utility designed to backup one drive's data onto another drive (either fixed, network or removable). The program recreates the exact source directories structure and, for each directory, it creates a PKZIP compatible archive with long file name support.

GRBack is fully customizable in order to include or exclude files, or skip whole directories by modifying simple \$backup.??? text files which are located in the source directory.

GRBack is fully integrated with the Microsoft's System Agent that comes with the Microsoft Plus! for Windows 95 and automatically inserts a task into the task list for the user to initiate a backup at every system start.

GRBack has an easy and intuitive user interface.

Surf one of the following World Wide Web pages and download it :

<http://www.bsoftware.com/cgi-bin/fetchsan.cgi?AuthorID=499,LocationID=1> <http://mini.net/cgi-bin/sax?2347>

Informazioni

In questa pagina sono riassunte le informazioni generali del programma in lingua italiana. In attesa della traduzione completa delle istruzioni in italiano sono qui descritte le informazioni generali di immediata necessità.

Supporto.

Per qualunque problema riguardante l'uso del programma fare riferimento ai nostri indirizzi: [Contact Information](#) .

Registrazione.

E' possibile registrare la vostra copia del programma in diversi modi aggiuntivi rispetto a quelli standard previsti; vedi [How to Register](#) .

Il prezzo del programma è fissato in Lire 60000 ed i modi per registrarsi sono :

- Contrassegno (aggiungere Lire 9000 per le spese postali).
- Vaglia postale.
- Assegno non trasferibile.
- Contanti.

Affichè sia possibile compilare la vostra licenza d'uso occorre che voi inseriate nella busta (o vaglia) i vostri dati personali. In tal modo sarà possibile generare il vostro file di registrazione personale. Tale file vi verrà inviato via internet e-mail, se possedete un modem ed un abbonamento ad internet, oppure insieme all'ultima versione del programma su dischetto (ovviamente in questo caso dovrete aspettare molto più tempo).

I dati necessari sono:

- Nome Cognome
- Indirizzo postale
- Numero di telefono (opzionale)
- Indirizzo di posta elettronica (es. mio.nome@provider.it)

Distribuzione.

Potete divulgare la versione shareware del programma a chi volete purchè il pacchetto rimanga integro (cioè non siano sottratti dei file o aggiunti degli altri).

Ovviamente gli utenti registrati non devono divulgare il loro file di registrazione personale ed il fatto che esso contiene i dati personali dell'utente dovrebbe disincentivare questo tipo di divulgazione.

